



MEASURE L BOND UPDATE

April 11, 2017

Measure L – Overview

- 2016 Project Update
- 2017 Project Update
- 2018 Project Update
- Program Schedule Review
- Presentation of 2017 Projects

Measure L – 2016 Project Review

- Phase II Technology Upgrade - Cabling
 - Stage I Cabling Upgrades:
 - Laneview - ***Buildings B, D & portables to be completed April 2017 break***
- Solar Project
 - DSA closeout is complete. The District has received all “Certification of Compliance Letters” from DSA.
- Remaining Work by School
 - Noble Elementary School:
 - Specialty doors – [4/21/17](#)
 - Sierramont Middle School:
 - FIS & Gym - Audio Visual: [4/25](#) & [4/26](#)
 - Vinci Park Elementary School:
 - Schedule to receive bids in early September of 2017. The FIS plan will be presented to the Board at the May 9th meeting.

Measure L – 2016 Project Update

- Central Kitchen
 - Expected completion *May* 2017



Measure L – 2017 Project Update

- **Stage IV Cabling Upgrades**
 - Brooktree, Northwood, Ruskin, Vinci Park - awarded - Summer 2017
- **Pavement Rehabilitation**
 - Brooktree, Cherrywood, Majestic Way – Bidding April/May
 - Piedmont Drop-Off Area - Design Phase
- **Modernization Projects**
 - Laneview/Majestic Way Modernization - Bids April 5, 2017
 - Laneview
 - Exterior painting
 - Painting of interior
 - Cleaning of tackable wall surface
 - Vinyl wall mural at MPR
 - Replacement of exterior courtyard double gates (4)
 - Stage curtains
 - Administration reception desk

Measure L – 2017 Project Update

- Modernization Projects

- Majestic Way

- Painting of interior walls and doors
 - Cleaning of tackable wall surface
 - Vinyl wall mural at MPR
 - Stage curtains

- Piedmont/Ruskin Modernization - [Bids April 11, 2017](#)

- Ruskin

- Painting of interior doors and walls
 - Cleaning of tackable wall surface
 - Replacement of select doors
 - Stage curtains

- Piedmont

- Exterior painting (wainscot) - The reason that we are partially painting the exterior at Piedmont (wainscot), is the campus was completely painted in 2014
 - Cleaning of tackable wall surface
 - Painting of interior walls
 - Stage curtains

Measure L – 2017 Project Update

- **Modernization Projects**

- Flooring replacement for 2017 projects will be through the State's CMAS program.
- Audio Visual at MPR for Laneview, Majestic Way and Ruskin
 - Is planned to be completed by the end of May
 - Piedmont's MPR upgrades will be part of the FIS project
- Laneview and Majestic Way FIS Project - **Bids early September 2017**

Measure L – 2018 Project Update

- **Modernization Projects**
 - Brooktree Elementary School
 - Design Phase
 - Cherrywood Elementary School
 - Design Phase
 - Toyon Elementary School
 - Design Phase Starting Mid April
 - Morrill Middle School
 - Design Phase

Measure L – Program Schedule

2016 Construction & Furniture Projects																																																			
<p>Construction Legend</p> <ul style="list-style-type: none"> Design Bid Award Construction Start of School Long Lead Items & Added Project Scope Project Complete 																								<p>Furniture Legend</p> <ul style="list-style-type: none"> Furniture Order Finalized Quote Pricing PO Generated Furniture Ordered Start of School Lead Time Furniture Received and Placed 																											
2016 Construction Projects																																																			
February				March					April				May					June				July				August				September				October					November					December							
Week				Week					Week				Week					Week				Week				Week				Week					Week					Week											
1	2	3	4	1	2	3	4	5	1	2	3	4	1	2	3	4	5	1	2	3	4	1	2	3	4	1	2	3	4	1	2	3	4	1	2	3	4	1	2	3	4	5	1	2	3	4	5	1	2	3	4
Central Kitchen																																																			
Sierramont FIS/Modernization																																																			
Noble FIS/Modernization																																																			
Stage I Cabling Upgrades																																																			

2017 Construction & Furniture Projects

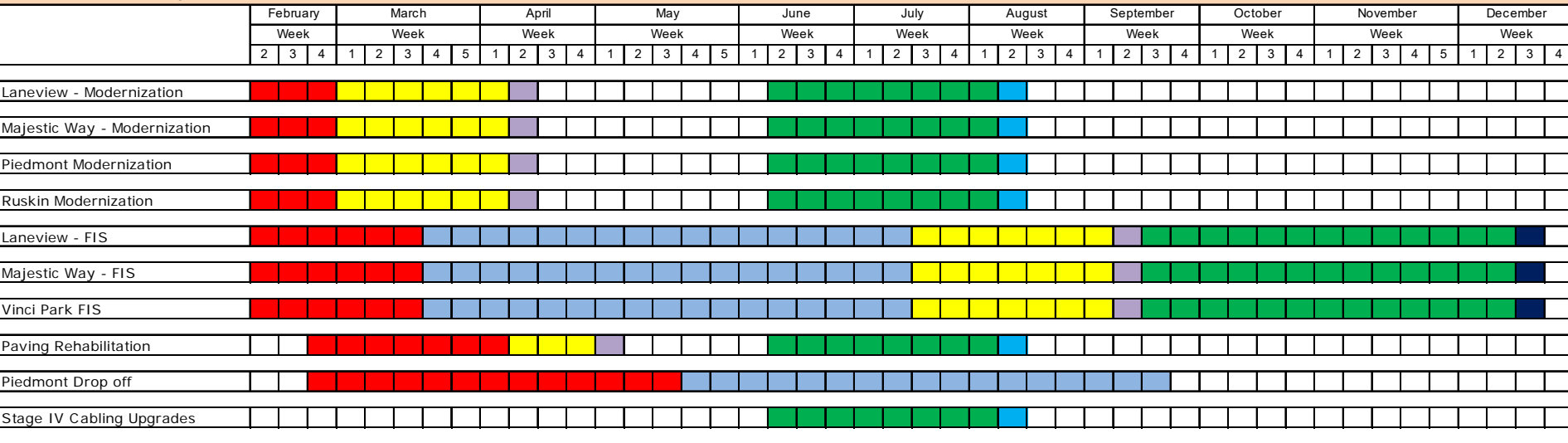
Construction Legend

- Design
- DSA Review
- Bid
- Award
- Construction
- Start of School
- Project Complete

Furniture Legend

- Furniture Order Finalized
- Quote Pricing
- PO Generated
- Furniture Ordered
- Start of School
- Lead Time
- Furniture Received and Placed

Construction Projects 2017



Furniture Projects 2017





BERRYESSA UNION SCHOOL DISTRICT

FLEXIBLE INSTRUCTION SPACE
AND CAMPUS MODERNIZATIONS

PRESENTATION AGENDA

INTRODUCTION

- > Team members
- > Progress to date

LANEVIEW ELEMENTARY SCHOOL & MAJESTIC WAY ELEMENTARY SCHOOL

- > General campus modernization scope
- > Flexible instructional space design

PIEMONT MIDDLE SCHOOL & RUSKIN ELEMENTARY SCHOOL

- > General campus modernization scope

INTRODUCTION – TEAM MEMBERS

ARCHITECTURE

DOUGHERTY

- +Brian Dougherty, FAIA, LEED AP
- +Steve Parker, AIA, LEED AP
- +Nicola Rutherford, LEED AP
- +Zoe Liang

COST ESTIMATING

RGM AND ASSOCIATES

- +Ralph Caputo, CEO & President
- +Jalil Bazyar, P.E.
- +Ramon Parocua

INTRODUCTION – PROGRESS TO DATE

+ MEETING WITH THE DISTRICT

+ SITE ASSESSMENTS

+ STAKEHOLDERS AND SUPERINTENDENT REVIEW

+ SUBMIT FIS TO DSA



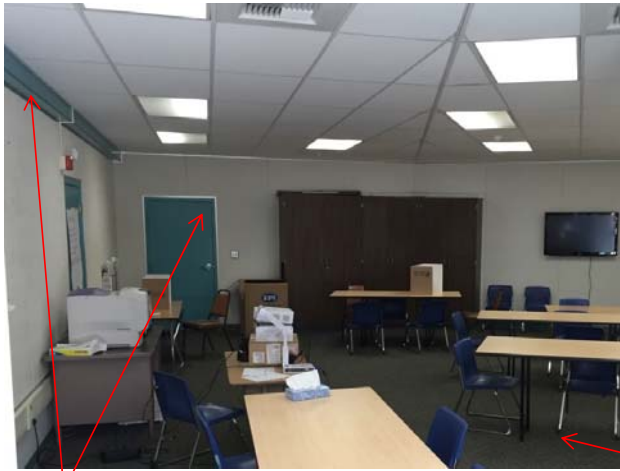
BERRYESSA UNION SCHOOL DISTRICT
LANEVIEW ELEMENTARY SCHOOL
FLEXIBLE INSTRUCTION SPACE
AND RELATED CAMPUS MODERNIZATIONS

GENERAL MODERNIZATION – EXTERIOR PAINTING



GENERAL MODERNIZATION – CLASSROOMS

- Replace carpet and flooring in non-storage spaces
- Paint various interior spaces



PT-5



CPT-1



PT-5



GENERAL MODERNIZATIONS – MULTIPURPOSE

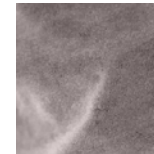
- Paint various interior spaces



PT-4



CTN-1



PT-9



PT-5



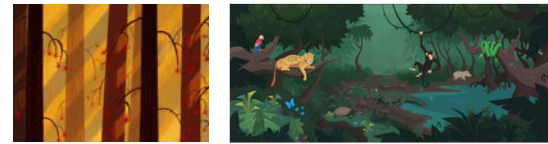
GENERAL MODERNIZATIONS – MULTIPURPOSE



REMOVE TACKBOARD FOR
PRINTED VINYL WALL COVERING



CONCEPTUAL SKETCH



INSPIRATION

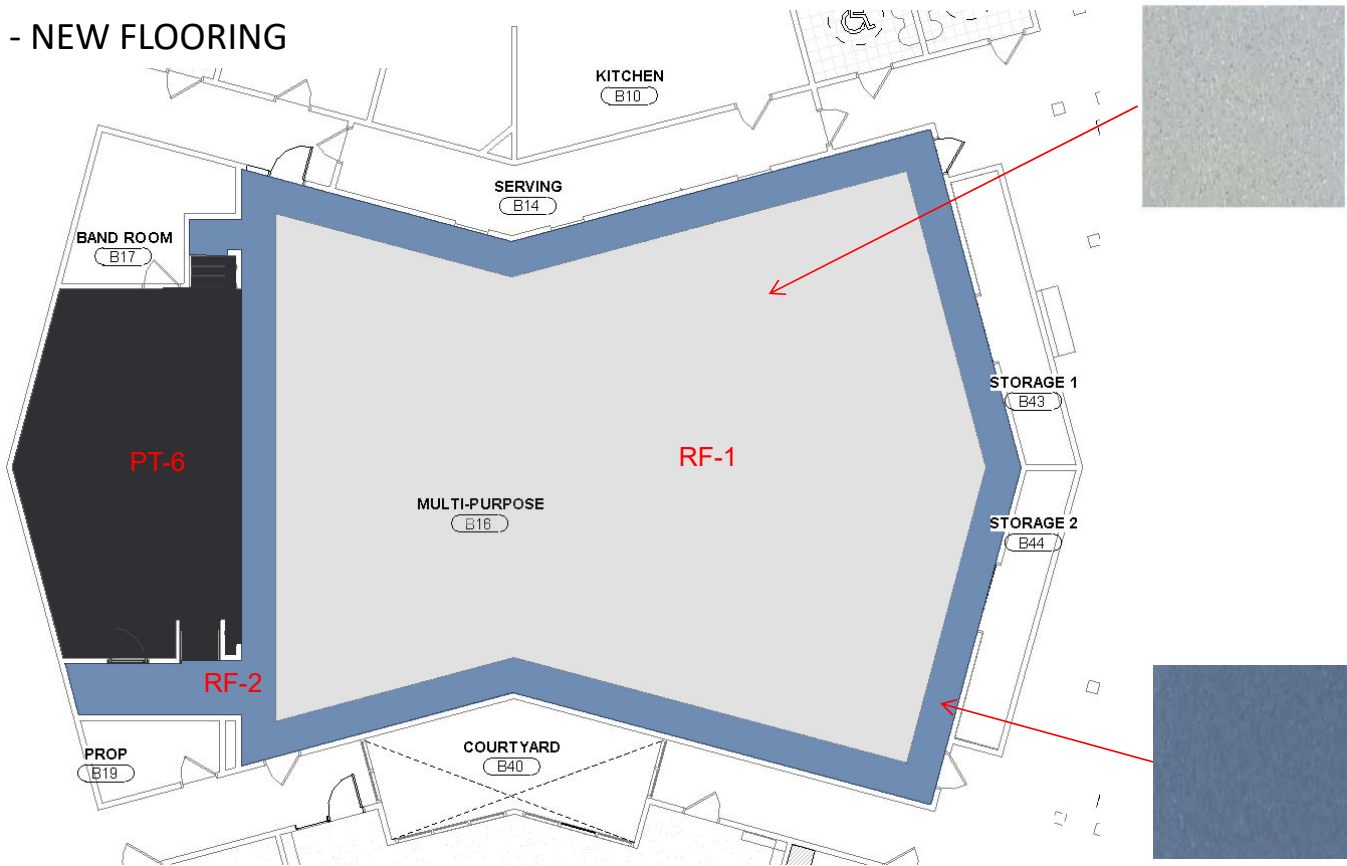


EXAMPLE: NORTHWOOD ES



GENERAL MODERNIZATIONS – MULTIPURPOSE

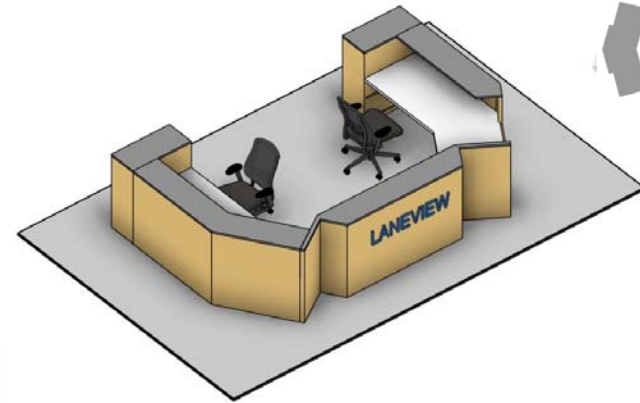
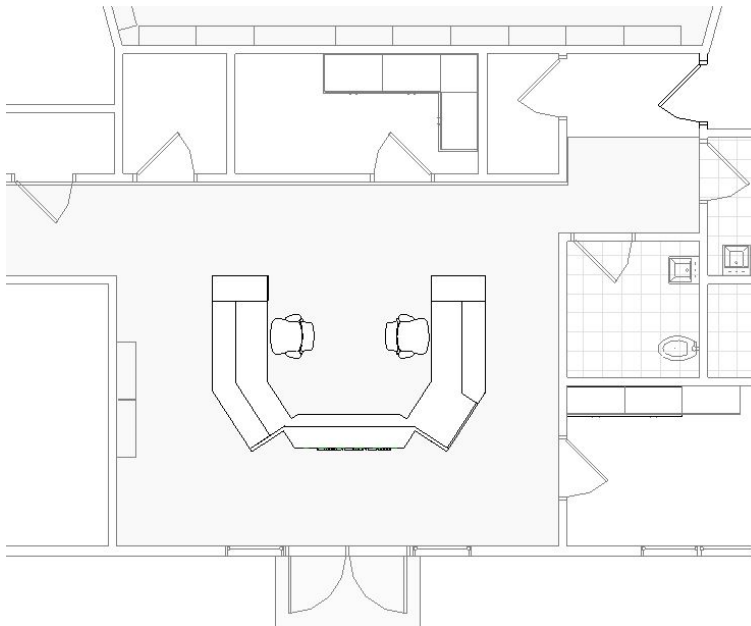
- NEW FLOORING



GENERAL MODERNIZATIONS – RECEPTION DESK

New reception desk in admin office.

- Re-direct circulation
- Inspired by shape of the campus
- Fits two staff members
- Cubies to store materials and ample shelf space
- Metal letter signage to enhance school identity



FLEXIBLE INSTRUCTIONAL SPACE

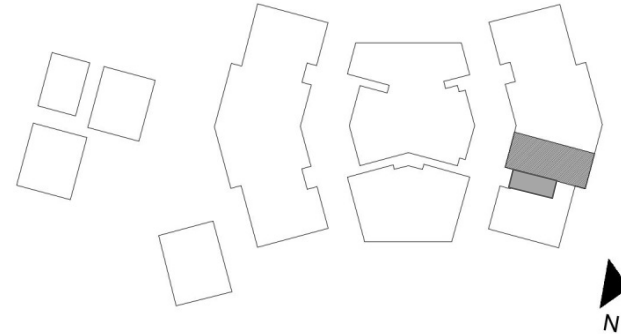
SUMMARY OF GOALS

-THE SPACE

- USE THREE EXISTING CLASSROOMS
- CAN CONTAIN MULTIPLE CLASSES AT A TIME
- NATURE-INSPIRED COLOR PALETTE
- DYNAMIC AND FLEXIBLE

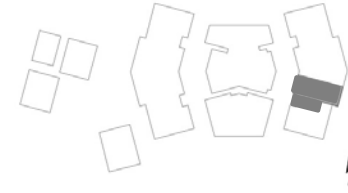
-CHOSEN LOCATION

ROOMS 16, 17 AND 23



FLEXIBLE INSTRUCTIONAL SPACE

FIS CONCEPT – BEEHIVE



SOLID SURFACE
COUNTERTOP

HEXAGONAL
RESILIENT LVT

RESILIENT LVT

STORAGE ROOM

FOLDING GLASS DOOR

RESILIENT LVT

MOVABLE WHITEBOARD
PARTITION

PROTOTYPE

IDEATE

SHARE

RESEARCH HIVE

LARGE DISPLAY
TV, TYPICAL OF 3

FLEXIBLE INSTRUCTIONAL SPACE

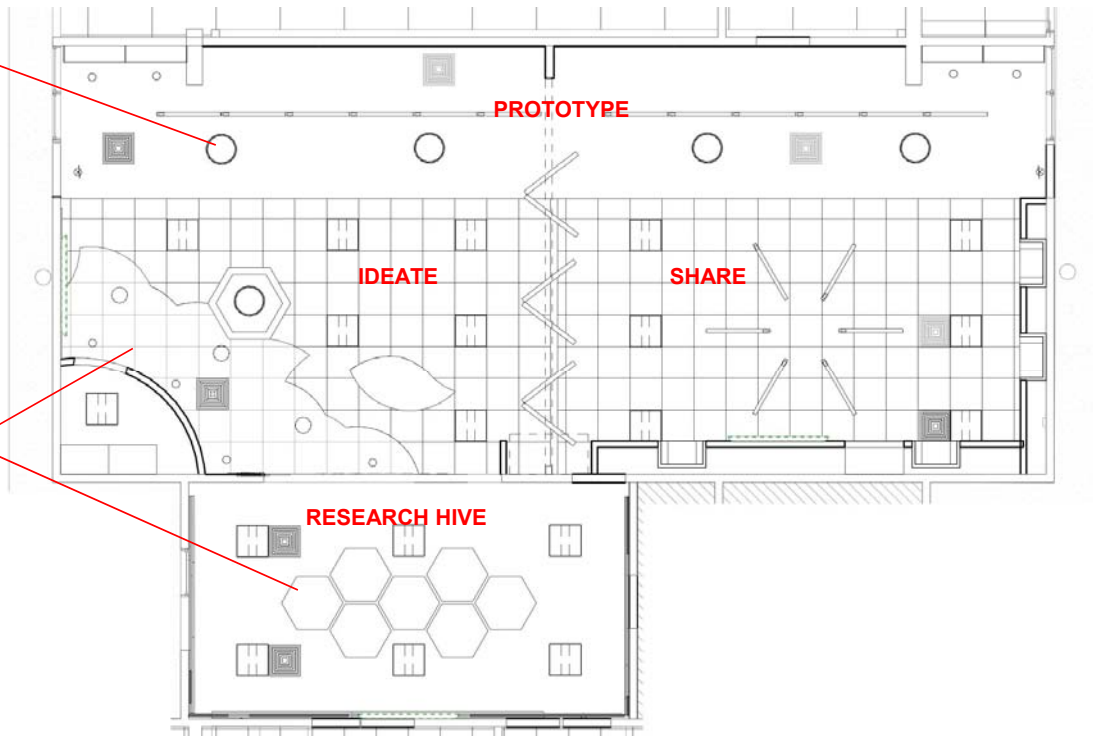
INSPIRATION + ELEMENTS - CEILING PLAN



TUBULAR SKYLIGHT



SUSPENDED CLOUDS



FLEXIBLE INSTRUCTIONAL SPACE

INSPIRATION + ELEMENTS – RESEARCH & IDEATE



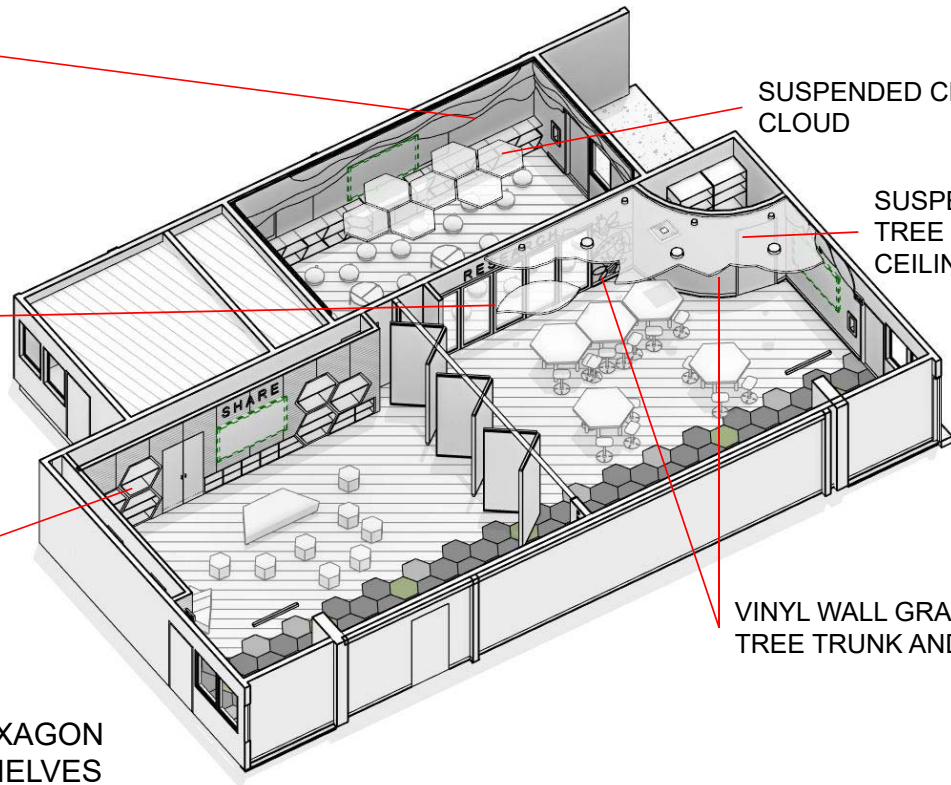
WALL PANELS IMITATING INTERIOR OF BEEHIVE



MOVABLE WHITEBOARD PARTITION



BUILT-IN HEXAGON DISPLAY SHIELVES



SUSPENDED CEILING CLOUD

SUSPENDED TREE CANOPY CEILING

VINYL WALL GRAPHICS OF TREE TRUNK AND BEES

FLEXIBLE INSTRUCTIONAL SPACE

INSPIRATION + ELEMENTS – PROTOTYPE & SHARE



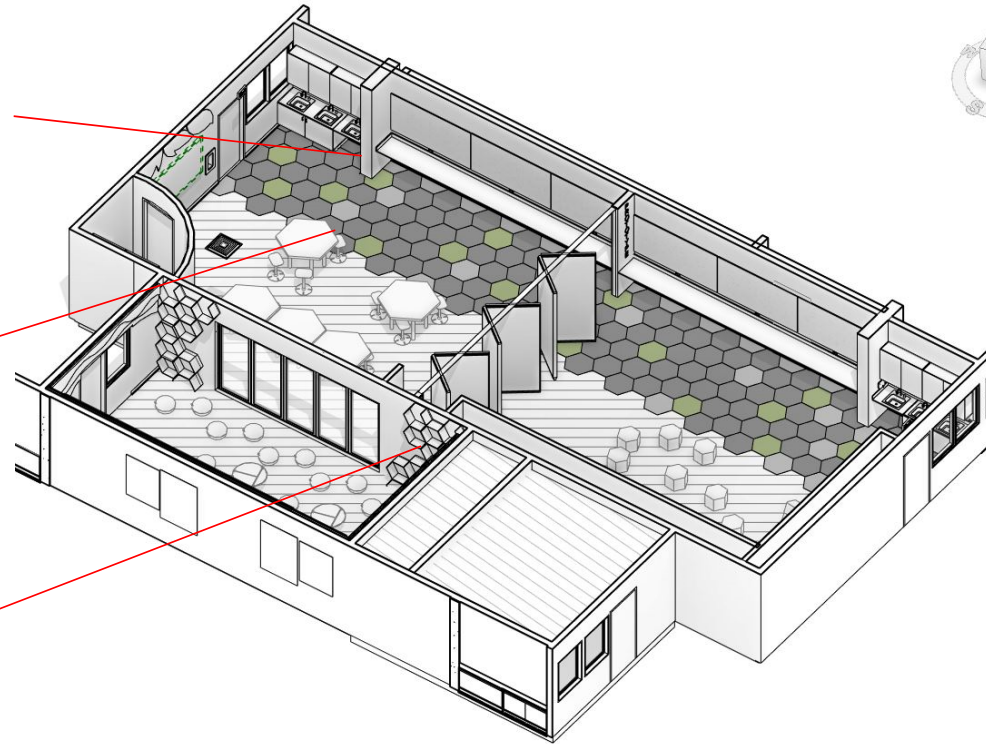
TACKBOARD WALL



HEXAGON FLOOR,
RANDOM COLOR
PATTERN

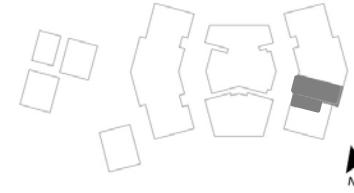


FULL HEIGHT HEXAGONAL SHIELVES



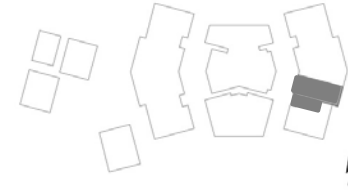
FLEXIBLE INSTRUCTIONAL SPACE

RESEARCH HIVE



FLEXIBLE INSTRUCTIONAL SPACE

IDEATE



FLEXIBLE INSTRUCTIONAL SPACE

SHARE





**BERRYESSA UNION SCHOOL DISTRICT
MAJESTIC WAY ELEMENTARY SCHOOL**
FLEXIBLE INSTRUCTION SPACE
AND RELATED CAMPUS MODERNIZATIONS

GENERAL MODERNIZATIONS – INT. PAINTING

COLORS:

FIELD

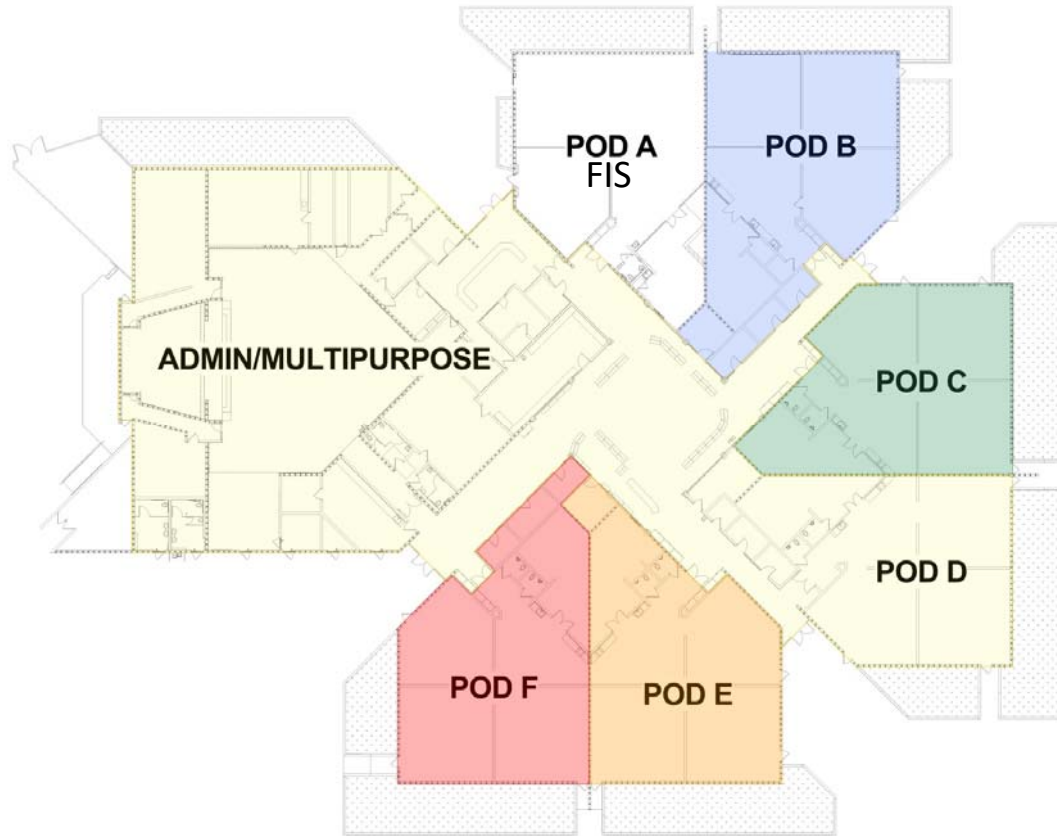
POD B

POD C

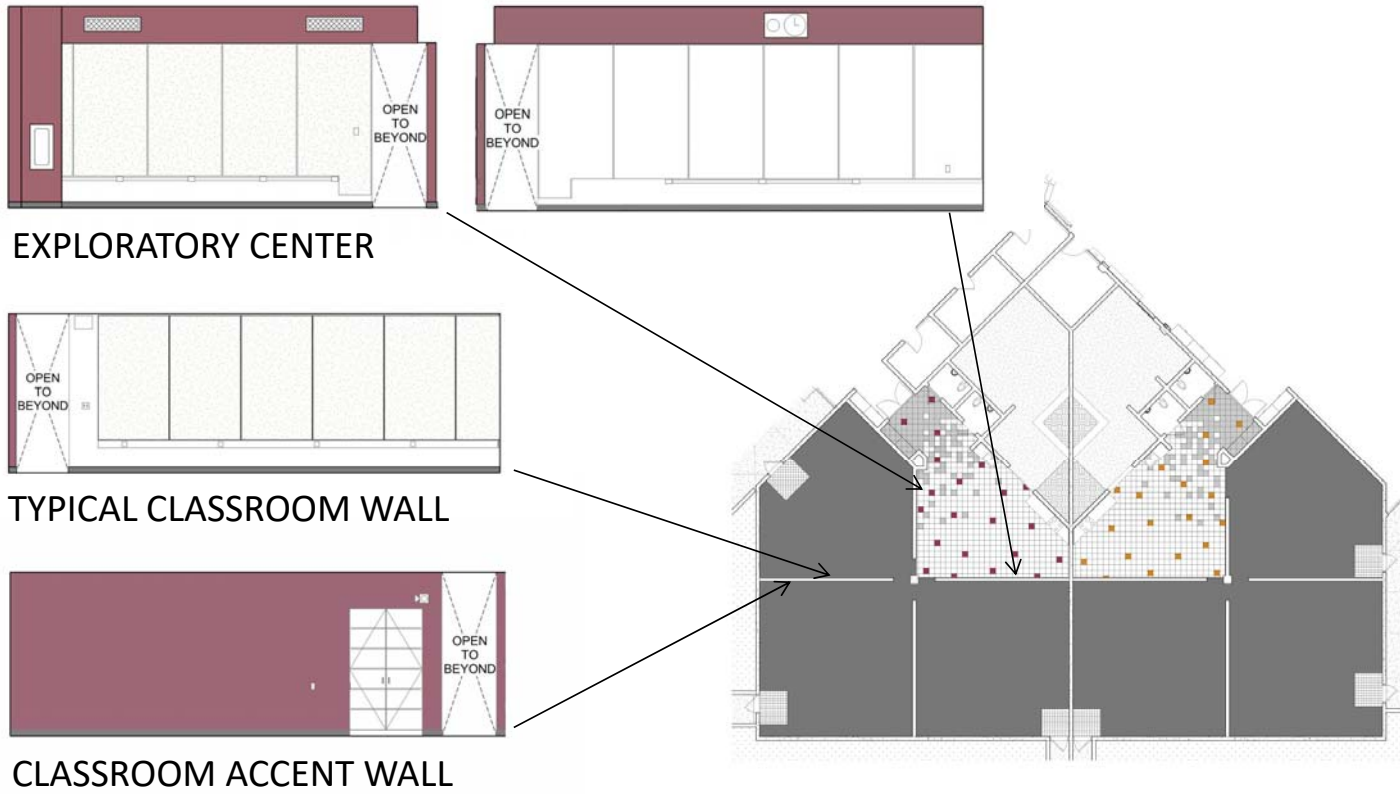
POD D/MPR

POD E

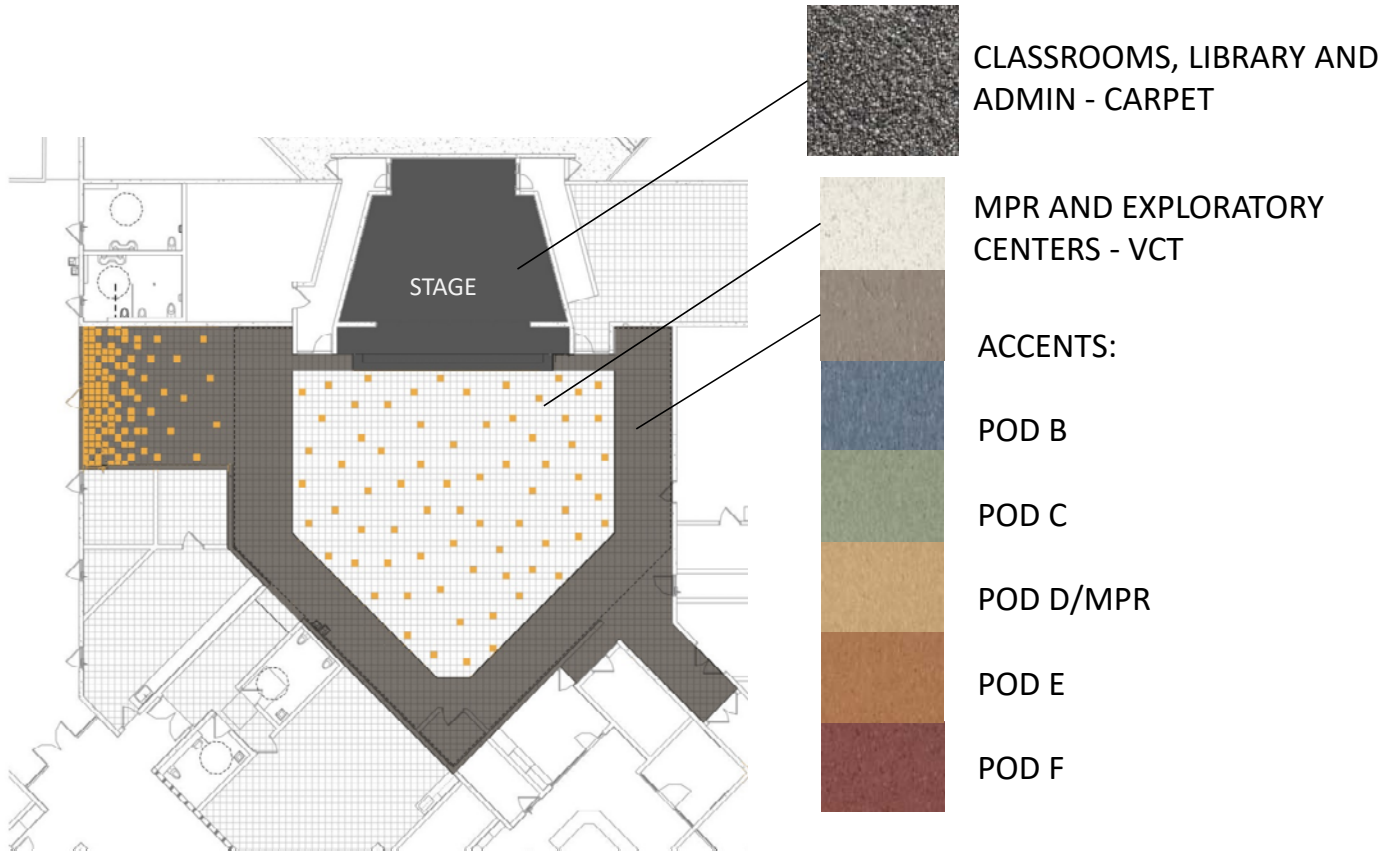
POD F



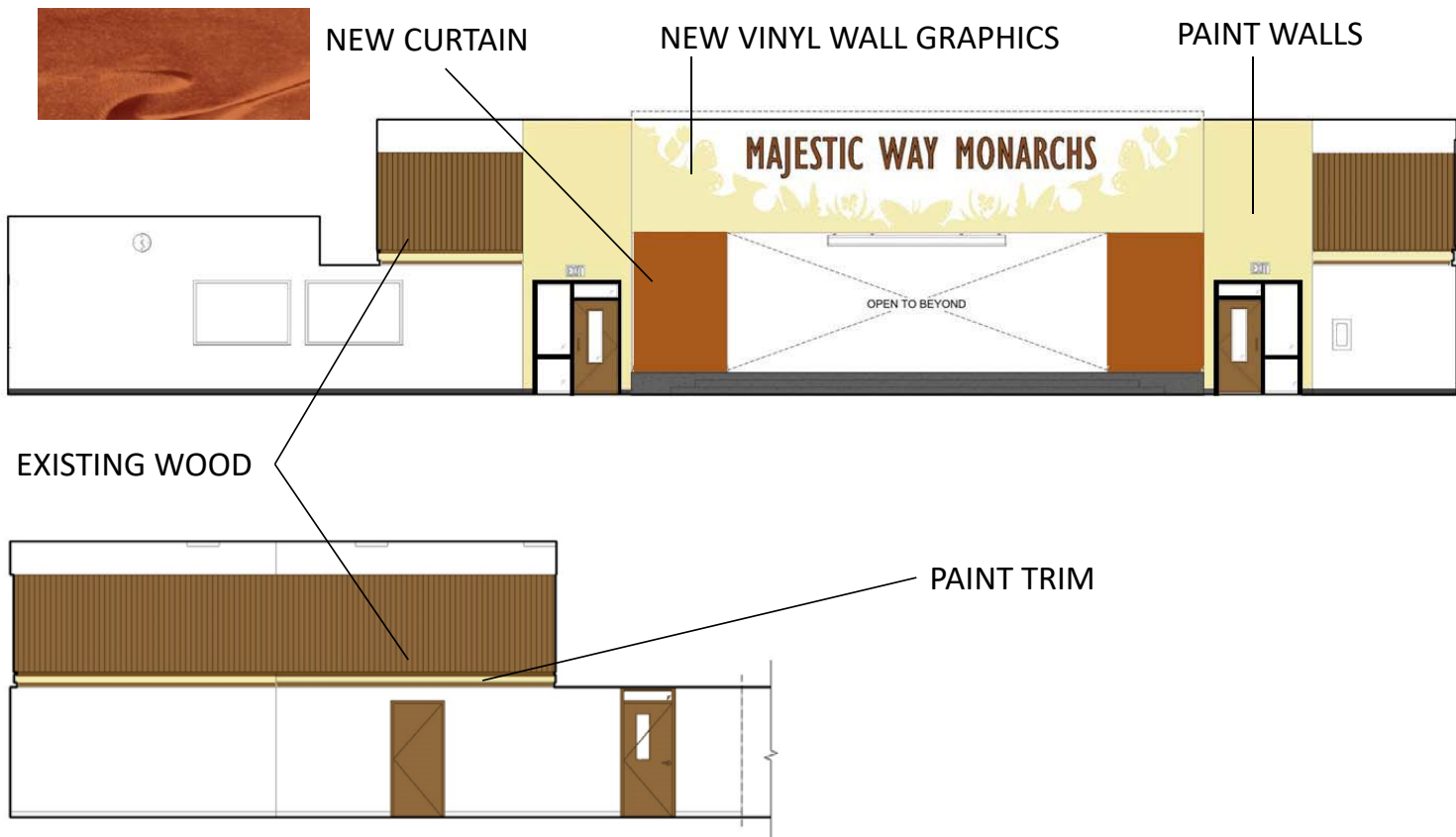
GENERAL MODERNIZATIONS – INT. PAINTING



GENERAL MODERNIZATIONS – FLOORING

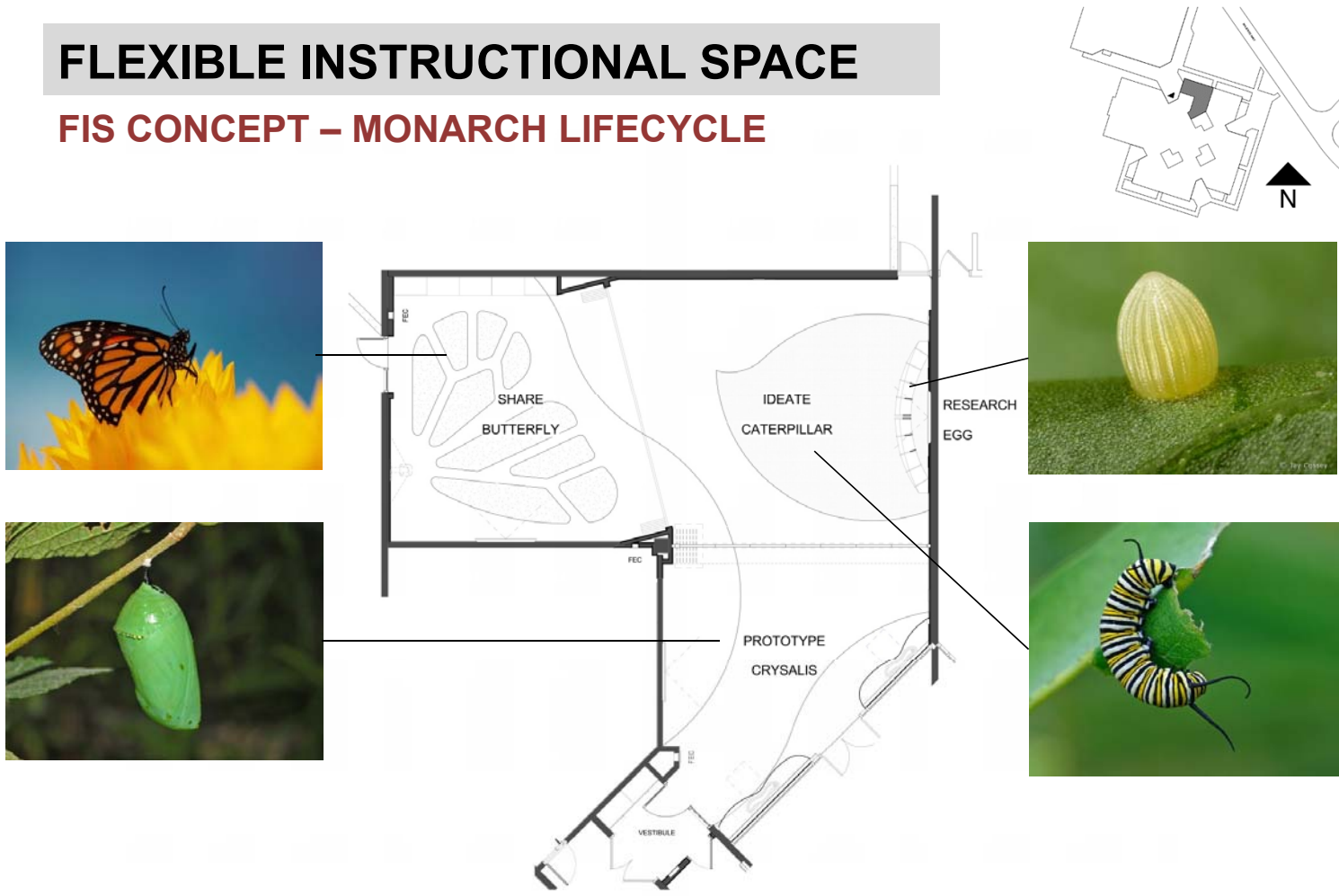


GENERAL MODERNIZATIONS – STAGE GRAPHIC



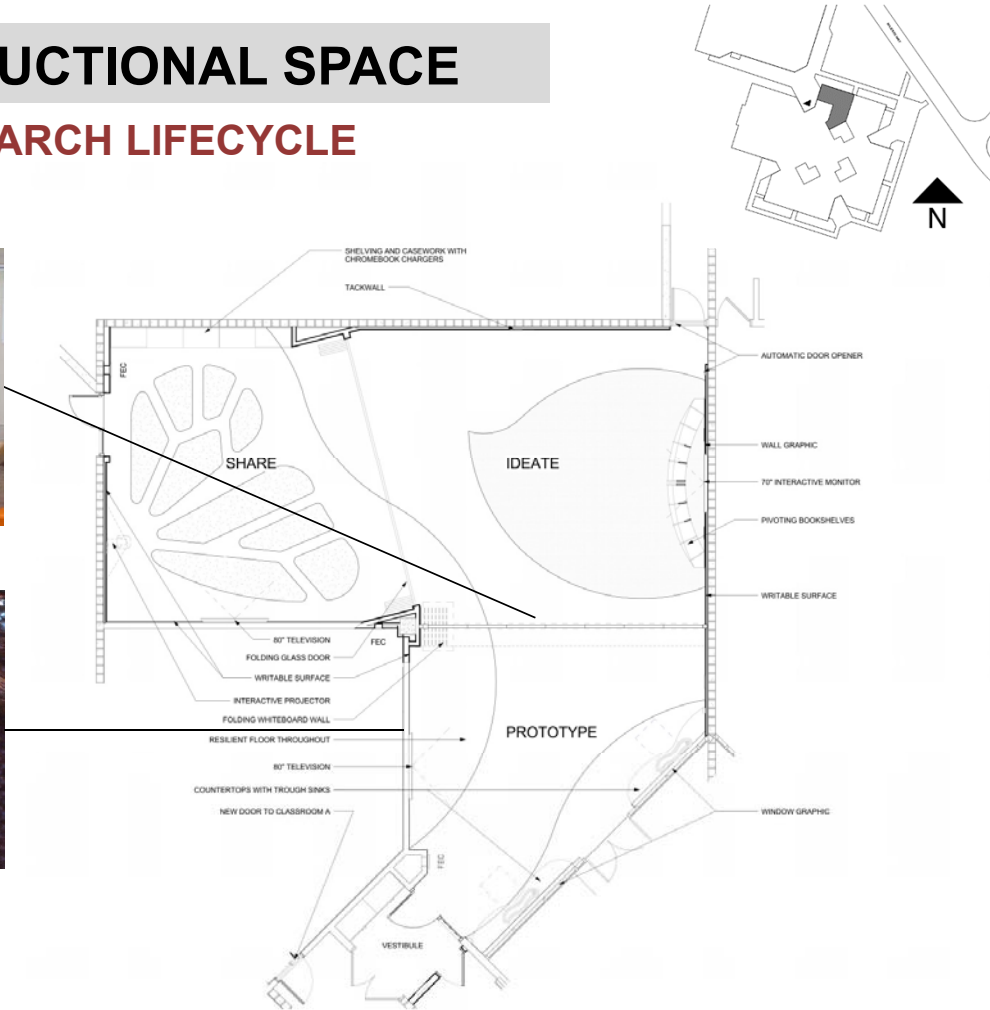
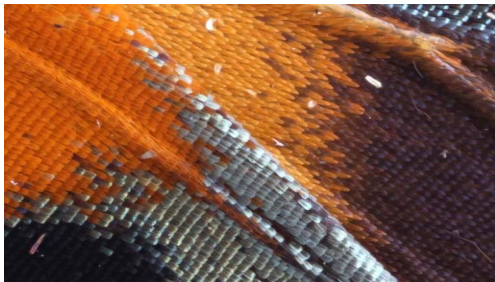
FLEXIBLE INSTRUCTIONAL SPACE

FIS CONCEPT – MONARCH LIFECYCLE



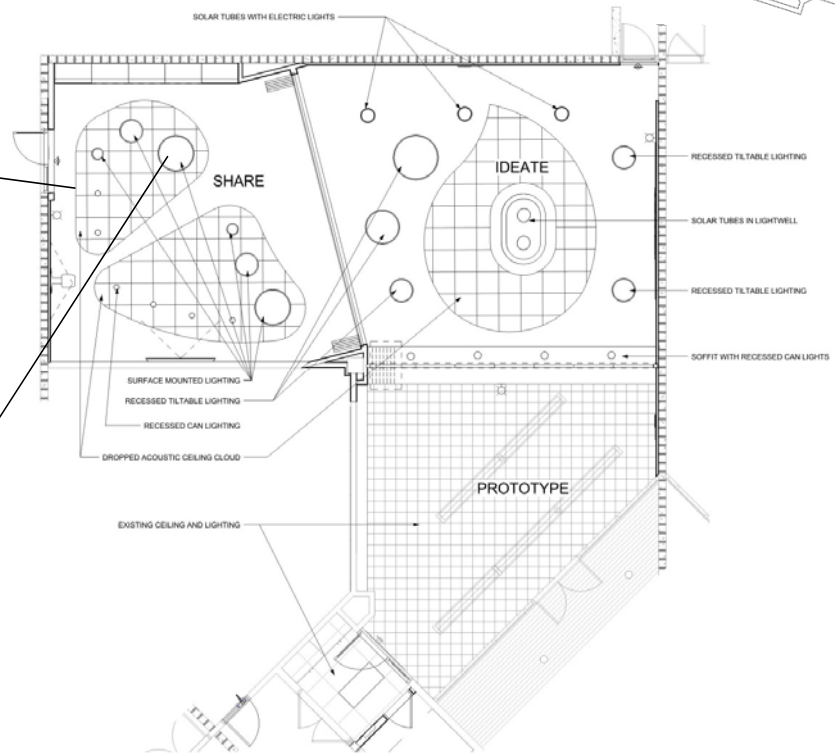
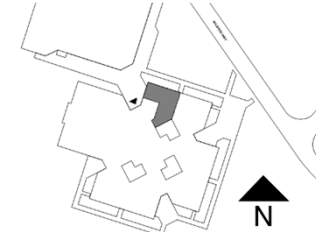
FLEXIBLE INSTRUCTIONAL SPACE

FIS CONCEPT – MONARCH LIFECYCLE



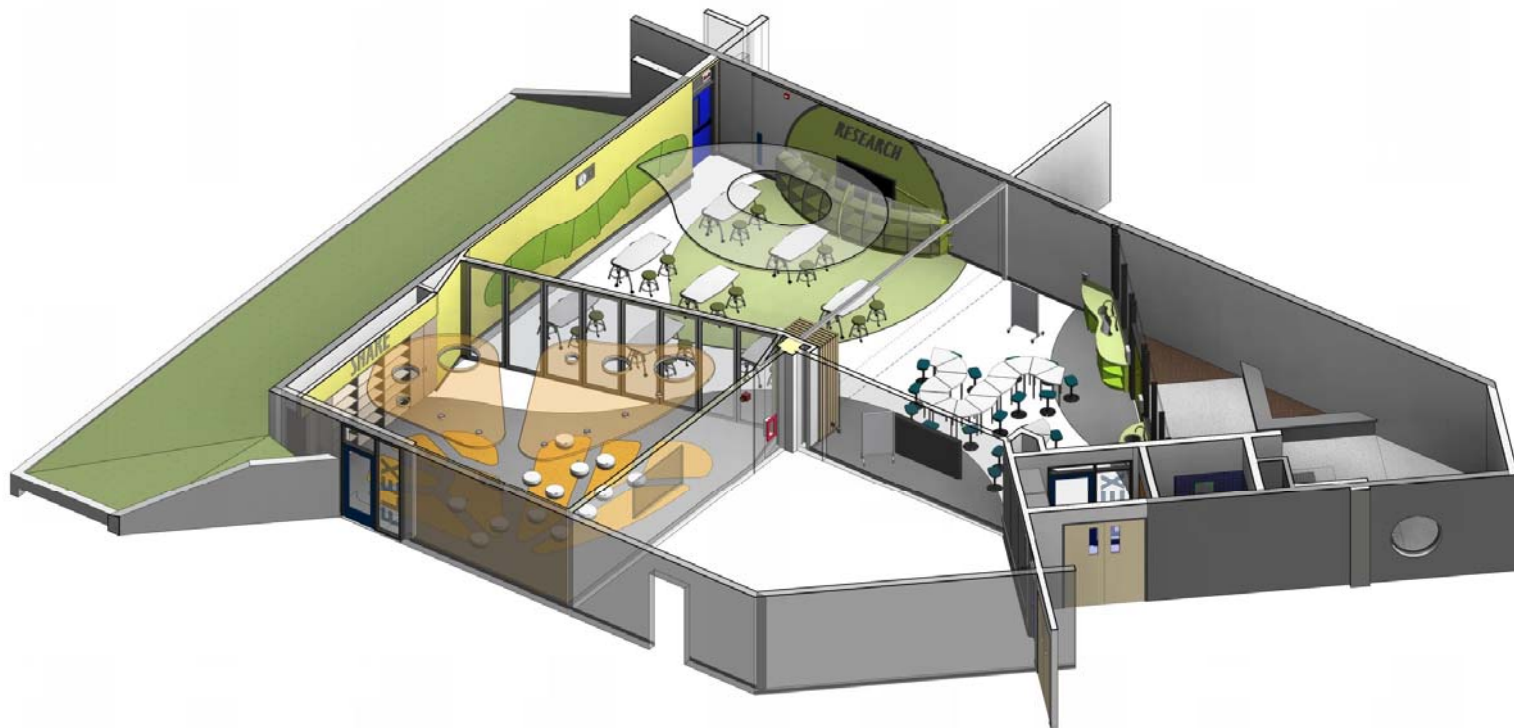
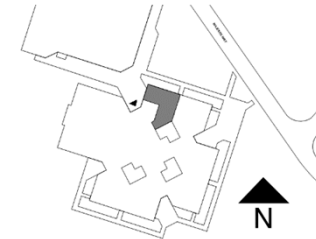
FLEXIBLE INSTRUCTIONAL SPACE

FIS CONCEPT – REFLECTED CEILING PLAN



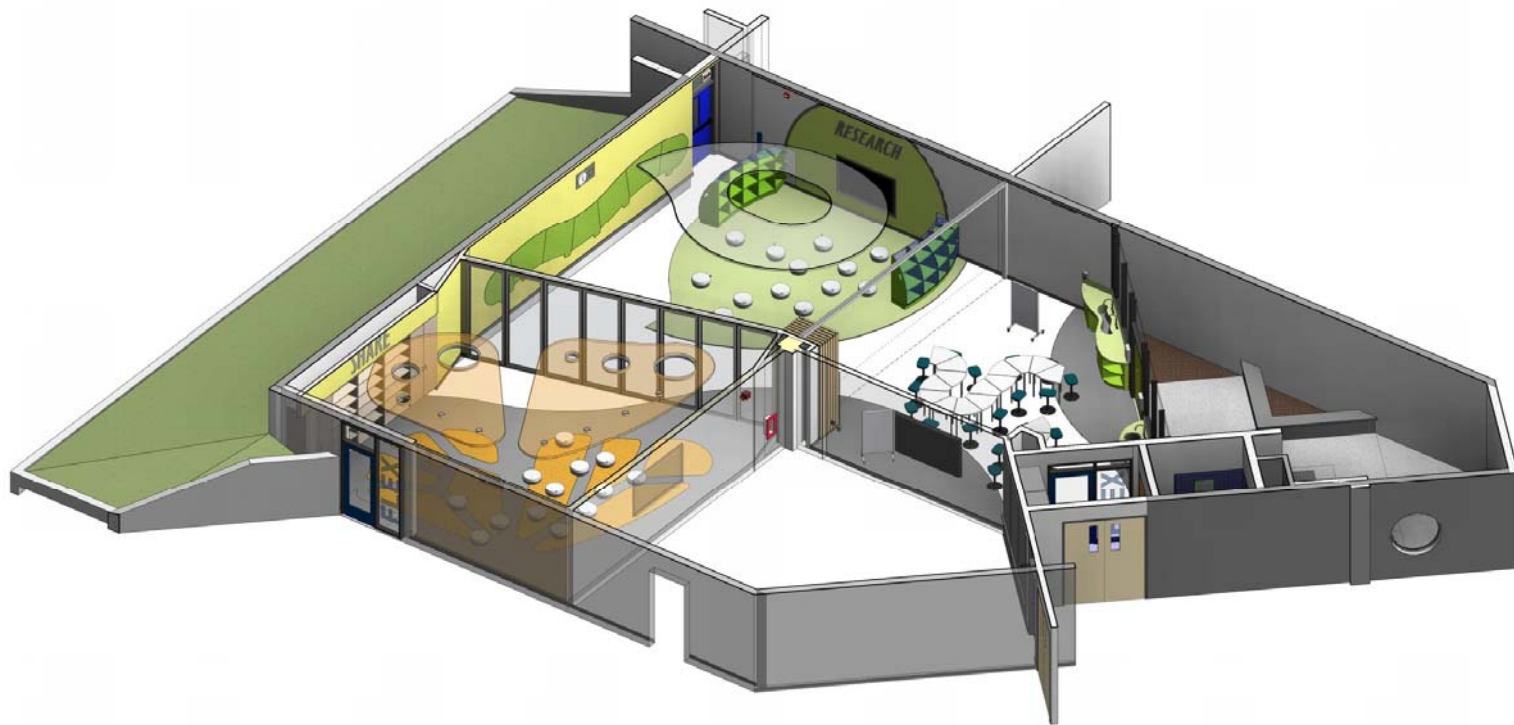
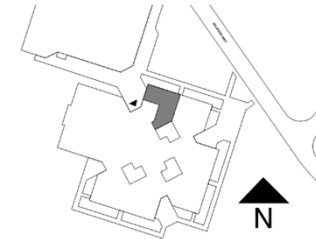
FLEXIBLE INSTRUCTIONAL SPACE

FIS CONCEPT – AXONOMETRIC VIEW



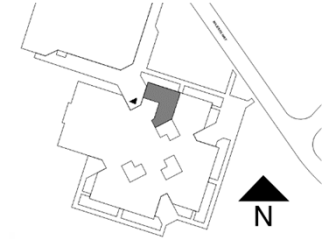
FLEXIBLE INSTRUCTIONAL SPACE

FIS CONCEPT – AXONOMETRIC VIEW



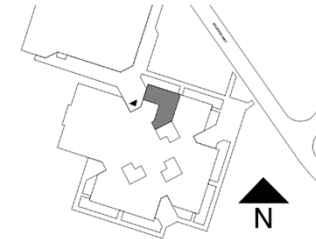
FLEXIBLE INSTRUCTIONAL SPACE

FIS CONCEPT – AXONOMETRIC VIEW



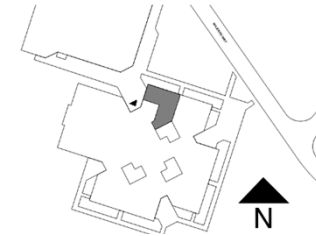
FLEXIBLE INSTRUCTIONAL SPACE

FIS CONCEPT – RENDERING



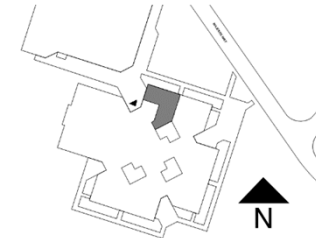
FLEXIBLE INSTRUCTIONAL SPACE

FIS CONCEPT – RENDERING



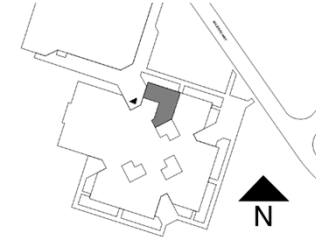
FLEXIBLE INSTRUCTIONAL SPACE

FIS CONCEPT – RENDERING



FLEXIBLE INSTRUCTIONAL SPACE

FIS CONCEPT – RENDERING





BERRYESSA UNION SCHOOL DISTRICT
PIEDMONT MIDDLE SCHOOL
CAMPUS MODERNIZATIONS

CAMPUS MODERNIZATION – EXTERIOR PAINTING



Paint wainscot with district standard oak color



Doors and the rest of the walls remain existing colors

CAMPUS MODERNIZATION – MULTI-PURPOSE ROOM



Closet under stage & all doors

Lower level walls

Higher level walls & window frames

Posts and beams

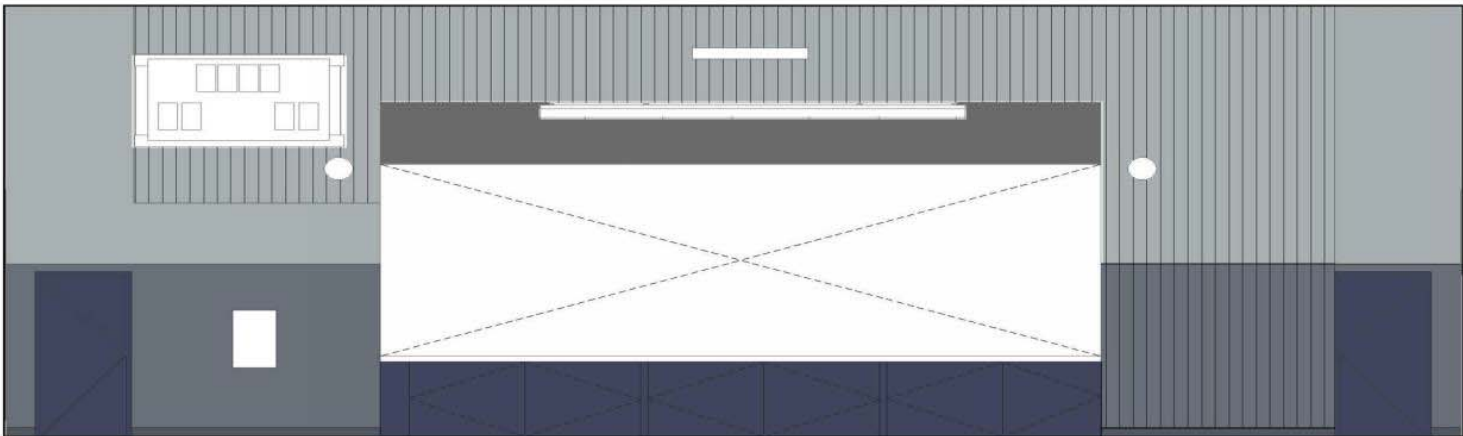
Ceiling, if budget allows



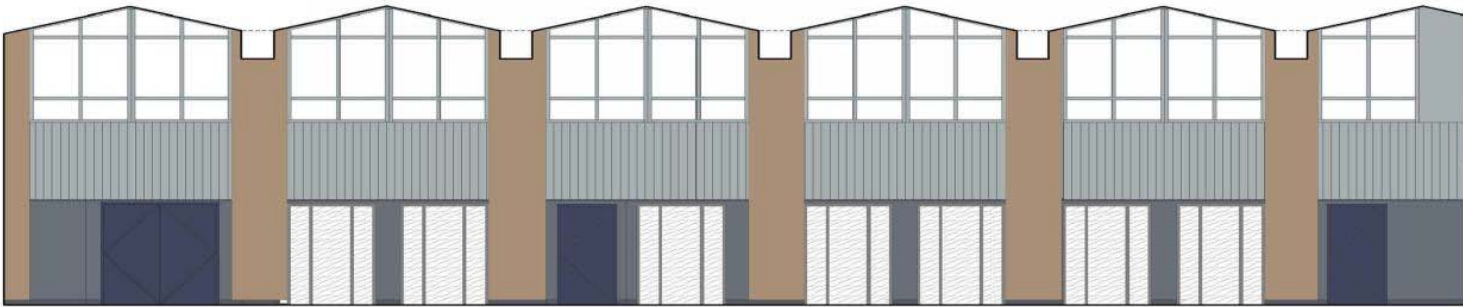
Curtain color

See next page for colored elevations

CAMPUS MODERNIZATION – MULTI-PURPOSE ROOM

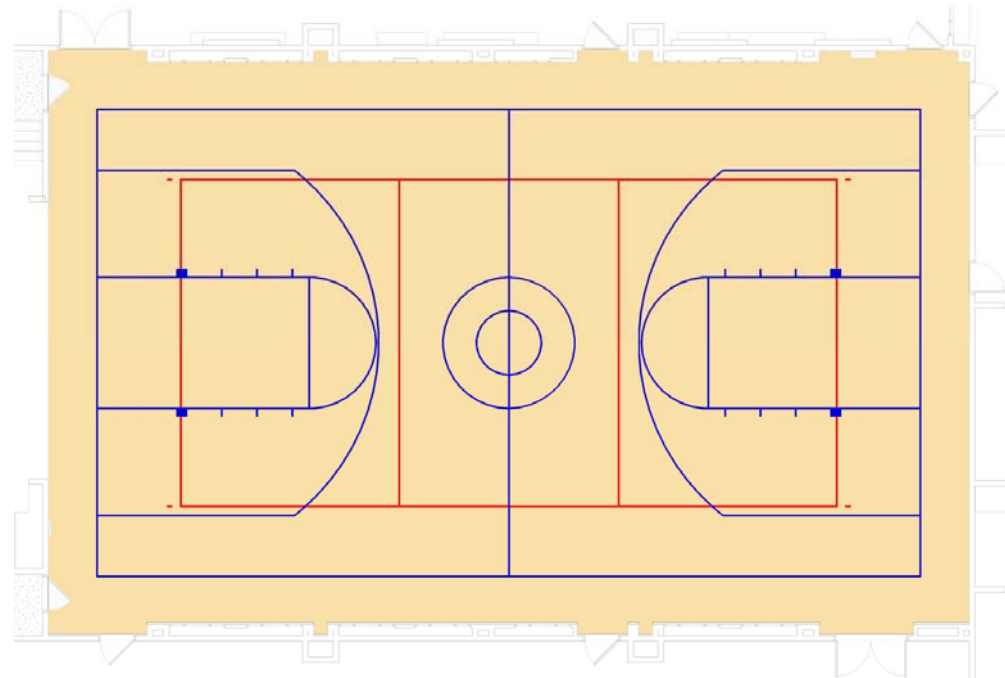


FRONT



SIDES

CAMPUS MODERNIZATION – MULTI-PURPOSE ROOM



Provide both a basketball and volleyball court

CAMPUS MODERNIZATION – CLASSROOM



Interior accent color wall, at wall facing main white board



Interior side of door & window frame



Carpet color - gray with accent blue

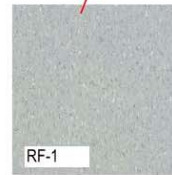
CAMPUS MODERNIZATION – CLASSROOM



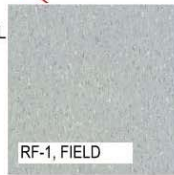
Remain in place



CAMPUS MODERNIZATION – LOUNGE & NURSE ROOM



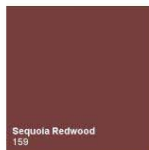
RF-1 & 2
 RF-1: FIELD TILE, 95% OF TOTAL
 TILE
 RF-2: ACCENT TILE, 5% OF
 TOTAL TILE
 RANDOM PATTERN



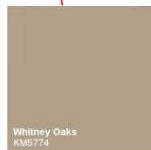


BERRYESSA UNION SCHOOL DISTRICT
RUSKIN ELEMENTARY SCHOOL
CAMPUS MODERNIZATIONS

CAMPUS MODERNIZATION – MULTI-MEDIA CENTER



Lower level doors & window frames
Red - same as existing exterior doors



Lower level walls
Oaks - one of district's standard colors



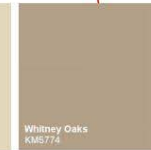
higher level walls & window frames



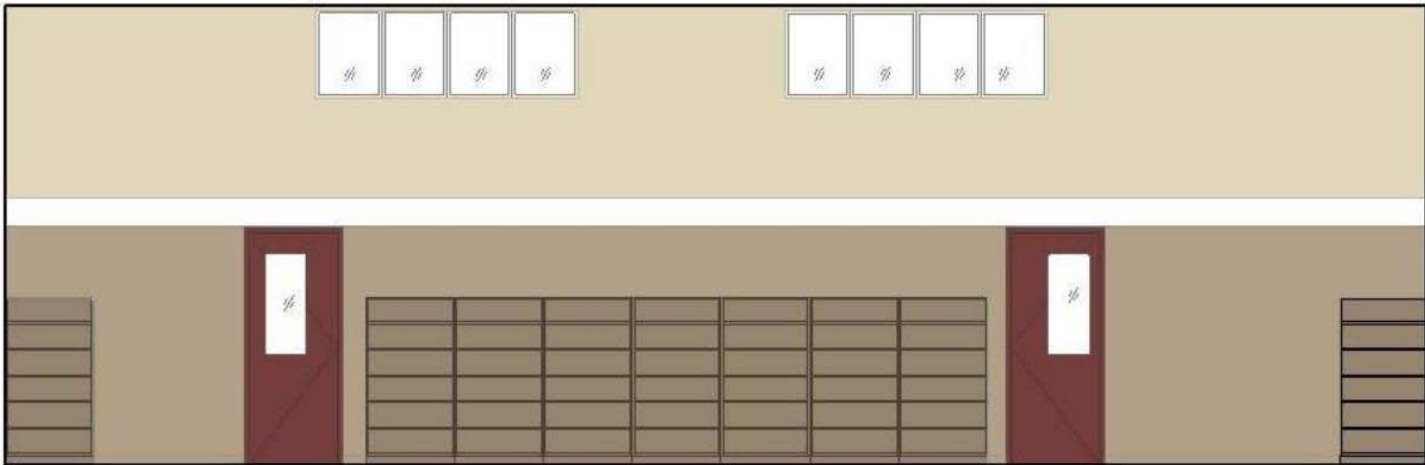
Ceiling, if budget allows



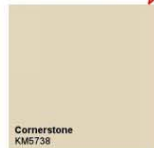
See next page for colored elevation



CAMPUS MODERNIZATION – MULTI-MEDIA CENTER



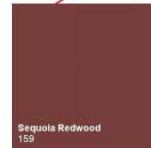
CAMPUS MODERNIZATION – MULTI-PURPOSE ROOM



Cornerstone
KM5738
Walls, soffit &
balconies at
the stage side



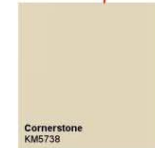
Curtain fabric color



Sequoia Redwood
159
Doors



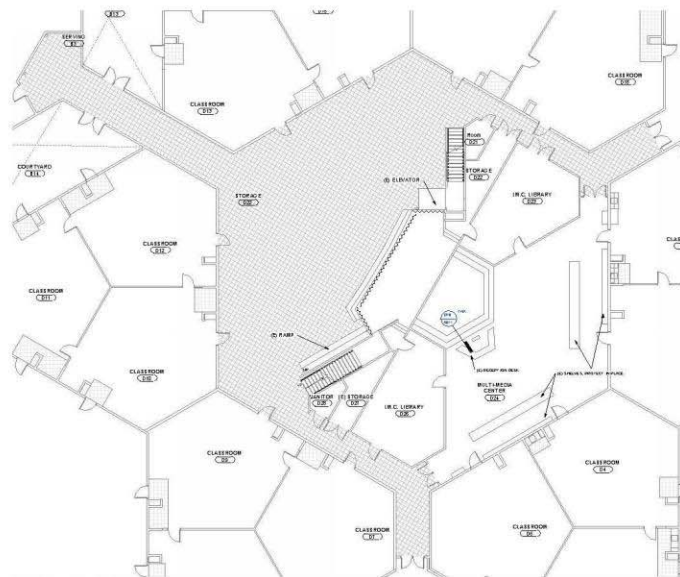
Acoustic White
48
Higher level
walls



Cornerstone
KM5738
window frames

Ceiling, if budget
allows

CAMPUS MODERNIZATION – MULTI-PURPOSE ROOM



Field color
-95%

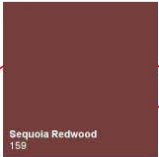


Accent color
-95%



Example of tile pattern

CAMPUS MODERNIZATION – CLASSROOM



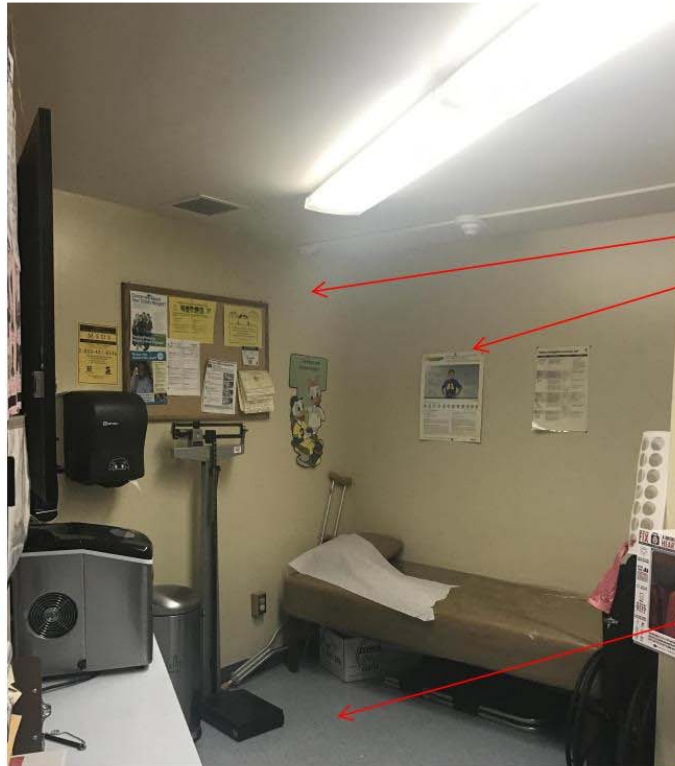
Interior doors
& Valence



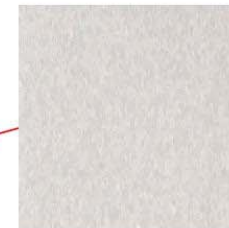
Carpet color - gray,
harmonize with
existing red and
blue colors in
classrooms



CAMPUS MODERNIZATION – LOUNGE & NURSE ROOM



Walls



Floor material: VCT tiles



Thank You